

LIFESTYLE MAGAZINE OF THE YEAR

Condé Nast Traveller

WIN A BRILLIANT TRIP
IN ONE OF THE UK'S
TOP LUXURY HOTELS



TRUTH IN TRAVEL®

NOVEMBER 2009 £5.50

WINTER SUN SPECIAL

6 of the best **NEW** hideaways in
Thailand
(Plus 10 more places to stay)

Australia's most civilised wilderness
Where to stay in the Blue Mountains

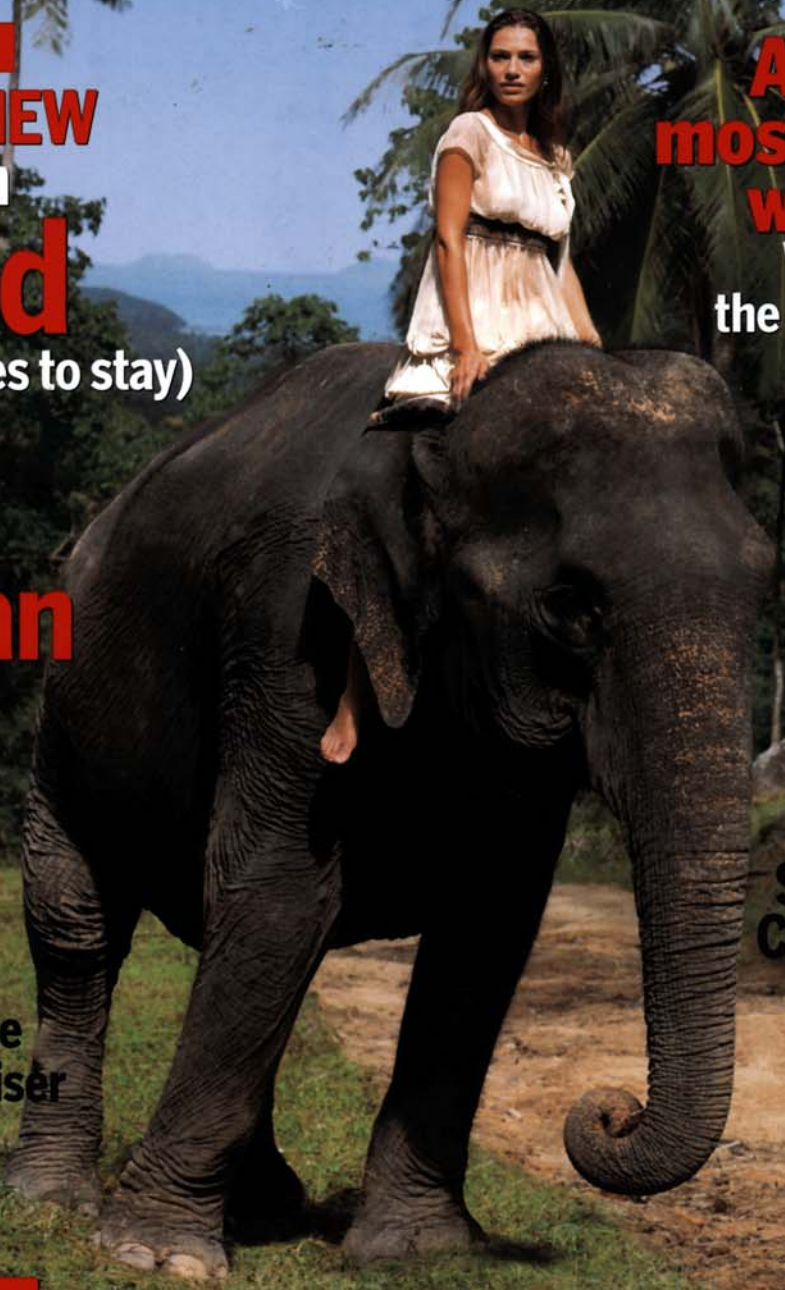
Intimate islands to call your own in the
Caribbean

Sails in the sunset
Gliding along the Nile in a two-masted cruiser

Spend Christmas in
India
+ 5 Raj hotels

A YEAR IN PROVENCE
How you can live the good life

The world's top places to dive
Five small and stylish Scottish retreats



Word of mouth



Peter Beard's 'The Hippo and the hand of the controller, Gorongoza'



"For a transitory, enchanted moment man must have held his breath in the presence of this continent, compelled into an aesthetic contemplation he neither understood nor desired, face to face for the last time in history, with something commensurate to his capacity for wonder."
(from Fitzgerald)



All that glitters

This gleaming gold Lindsey beach bag, designed by Anya Hindmarch, is woven from soft, metallic Napa leather. It was such a hit in spring/summer 2006 that it is back for the autumn – and as it reflects the sun, you won't lose it in the sand. Price £375. Contact 020 7838 9177; www.anyahindmarch.com.



Open wide

Poignantly captioned artworks capture the harsh realities of Kenya

Veteran photographer, diarist and wildlife enthusiast **Peter Beard**, whose magpie collection of found objects and ephemera – plus entries from decades of diary-keeping – adorn his photography, has a new exhibition opening at the **Michael Hoppen Gallery** in London's Chelsea. Giant silver gelatine prints

capture one of his great passions: the landscapes, wildlife and people of Kenya. The images were inspired by a visit this year to his farm, Hog Ranch, in the Ngong Hills. The harsh realities of modern Kenya, from over-population to HIV to animal poaching, are expressed with dark humour: so a human hand (pictured above) dangles insouciantly near a hippo's open mouth, captioned

with a bleak, beautiful quotation from F Scott Fitzgerald. Colonial Africa, wild animals and Kenya's even wilder party people are featured, too. The exhibition runs from 30 November–25 January 2007 at the **Michael Hoppen Gallery**, London (020 7352 3649; www.michaelhoppengallery.com). Open Tues–Sat



Moonlight Head Lodge

Outback

Moonlight Head Lodge, the first of five lodges and a boutique hotel to be built on the cliffs above the Great Ocean Road in Victoria, Australia, has just opened with space for eight people and its own chef. Owner and hotelier Mark Banning-Taylor commissioned Pritzker Prize-winning architect Glen Murcott and associate Wendy Lewin to design a building of modernist sensibilities that would sit among the eucalyptus trees of the bush with as low a profile as possible. The lodge is surrounded by 42 hectares of bush and farmland and its huge interior spaces (260 square metres) are filled with sophisticated pieces of furniture, original artworks and antique Persian rugs. The bluestone floors keep their cool in the summer, the windows frame rugged, beautiful views and the skylights above the over-sized baths grant guests a view of the stars unaffected by ambient light or jet trails. **Moonlight Head Lodge, Yuulong, Victoria, Australia (00 61 3 5237 5208; www.moonlighthead.com); lodge from £1,200**